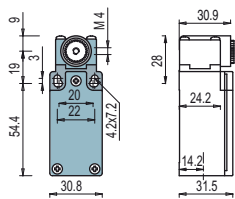


Position switches with revolving lever without actuator

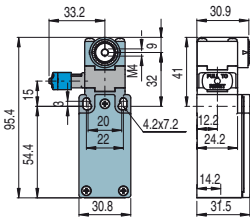
All measures in the drawings are in mm

Contact type:

- R** = snap action
- L** = slow action
- LO** = slow action overlapped
- LS** = slow action shifted
- LV** = slow action shifted and spaced
- LI** = slow action independent
- LA** = slow action closer
- ⏏** = electronic PNP



With manual reset knob



IMPORTANT

For safety applications: join only switches and actuators marked with symbol ⊕ aside the product code.
For more information about safety applications see details on page 235.

Contact blocks

5	R	FM 538-M2 ⊕	1NO+1NC	
6	L	FM 638-M2 ⊕	1NO+1NC	FM 638-W3M2 ⊕ 1NO+1NC
7	LO	FM 738-M2 ⊕	1NO+1NC	
9	L	FM 938-M2 ⊕	2NC	FM 938-W3M2 ⊕ 2NC
10	L	FM 1038-M2	2NO	FM 1038-W3M2 2NO
11	R	FM 1138-M2 ⊕	2NC	
12	R	FM 1238-M2	2NO	
13	LV	FM 1338-M2 ⊕	2NC	
14	LS	FM 1438-M2 ⊕	2NC	
15	LS	FM 1538-M2	2NO	
16	LI	FM 1638-M2 ⊕	2NC	
18	LA	FM 1838-M2 ⊕	1NO+1NC	
20	L	FM 2038-M2 ⊕	1NO+2NC	FM 2038-W3M2 ⊕ 1NO+2NC
21	L	FM 2138-M2 ⊕	3NC	FM 2138-W3M2 ⊕ 3NC
22	L	FM 2238-M2 ⊕	2NO+1NC	FM 2238-W3M2 ⊕ 2NO+1NC
2	R	FM 238-M2	2x(1NO-1NC)	FM 238-W3M2 2NO+2NC
E1	⏏	FM E138-M2	1NO-1NC	
Min. force		0.06 Nm (0.25 Nm) ⊕		0.07 Nm (0.25 Nm) ⊕
Travel diagrams		page 240 - group 5		page 241 - group 4

All measures in the drawings are in mm

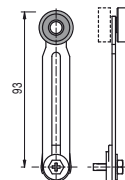
Loose actuators

All measures in the drawings are in mm

IMPORTANT: These loose actuators can be used with items of series FR, FM, FX, FZ and FK only.

Technopolymer roller Ø 18 mm	Technopolymer roller Ø 18 mm	Adjustable square rod, 3x3x125 mm	Flexible rod with pointed end	Adjustable round rod Ø 3x125 mm	Technopolymer roller Ø 20 mm	
VF LE30 ⊕	VF LE31 ⊕	VF LE33	VF LE34	VF LE50	VF LE51 ⊕	
Technopolymer roller Ø 20 mm	Porcelain roller	Technopolymer roller Ø 20 mm	Adjustable actuator with technopolymer roller	Adjustable safety actuator with technopolymer roller	Technopolymer roller Ø 20 mm	Adjustable fiber glass rod
VF LE52 ⊕	VF LE53 ⊕ ⁽²⁾	VF LE54 ⊕	VF LE55 ⊕ ⁽¹⁾	VF LE56 ⊕	VF LE57 ⊕	VF LE69

- ⁽¹⁾ Actuator VF LE55 can only be used in safety applications if adjusted to its max. length, as shown in figure beside. If you need an adjustable lever for safety applications, use the adjustable safety lever VF LE56.
- ⁽²⁾ The position switch obtained by assembling switch FM •38-M2 (e.g. FM 538-M2, FM 638-M2...) with actuator VF L53 will not present the same travel diagrams and actuating forces as switch FM •53-E0M2V9 (e.g. FM 553-E0M2V9, FM 653-E0M2V9...).
- ⁽⁴⁾ The actuator cannot be rotated to the inside because it will mechanically interfere with the switch head.



Items with code on green background are stock items

Accessories See page 225